



D'ARTS™

DIVISION OF DAVIDQIAN™ CO. LTD

ORDER PROCEDURE

The background features a repeating pattern of stylized flowers and butterflies in a light, monochromatic color scheme. The flowers are large and detailed, with many petals, and the butterflies are scattered throughout the scene. The overall aesthetic is clean and elegant.

D'ARTSTM

DIVISION OF DAVIDQIANTM CO. LTD

How to order Standard Wall Covering

How to order Standard Wall Covering

D'ARTS standard wall covering offer makes ordering easy. The standard offer has two heights to choose from; [10ft high or 8ft high](#). The colour & material of the wall covering are also standard; customer chooses a design and colour printed on a material exactly as it appears in our catalogue.

To order our standard wall covering:

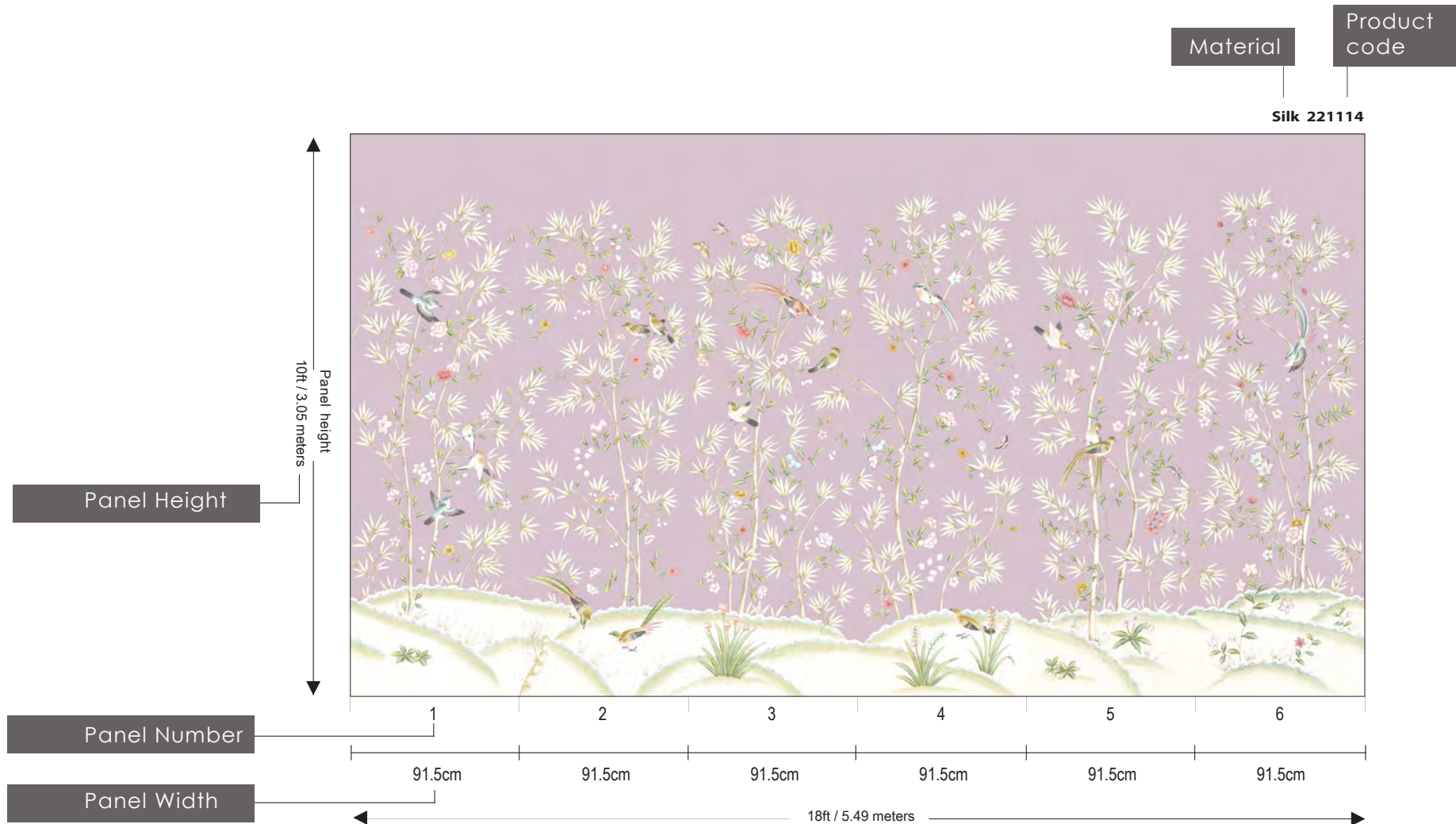
1. Customer selects a design from our catalogue by telling us the [unique six-digit product code](#).
2. Customer selects the height to best fit their wall, so chooses either 8ft high or 10ft high wall covering.
3. Customer calculates how many panels are needed to cover the wall. [Each panel will be 3ft \(91.5cm\) wide](#) (panels are printed at 93cm and trimmed to 91.5cm when installed).customer can order [part of the design](#) and customer can order [more panels](#) of the design if the wall size is longer than the design width.
4. Customer must always contact D'ARTS if they are not sure how many panels they needed by telling us the width and height of their wall so we can calculate for them.
5. If customer is unsure about their choice of colour or material, they have an option to order an A4 sample of design in the colour and on material selected. **Please note requests for A4 samples are limited to a maximum of 3 samples for each room being decorated.**
6. When customer has decided the height (either 8ft or 10ft) and the number of panels required D'ARTS will provide a quotation, then an invoice.
7. Standard lead time is 2 weeks from receipt of payment, depending on our production schedule. Payment is required in full before production begins.
8. Customer can order the material in the same colour as the background colour so it matches the design.

D'ARTS™

DIVISION OF DAVIDQIAN™ CO. LTD

[<BACK TO PROCEDURES>](#)

How to order Standard Wall Covering



How to order Standard Wall Covering

Designs from our Summer Palace, Suzhou Garden and Zen collection: the standard offer of 10ft high consists of 6 individual panels, the first panel of the design can be joined to the last panel.

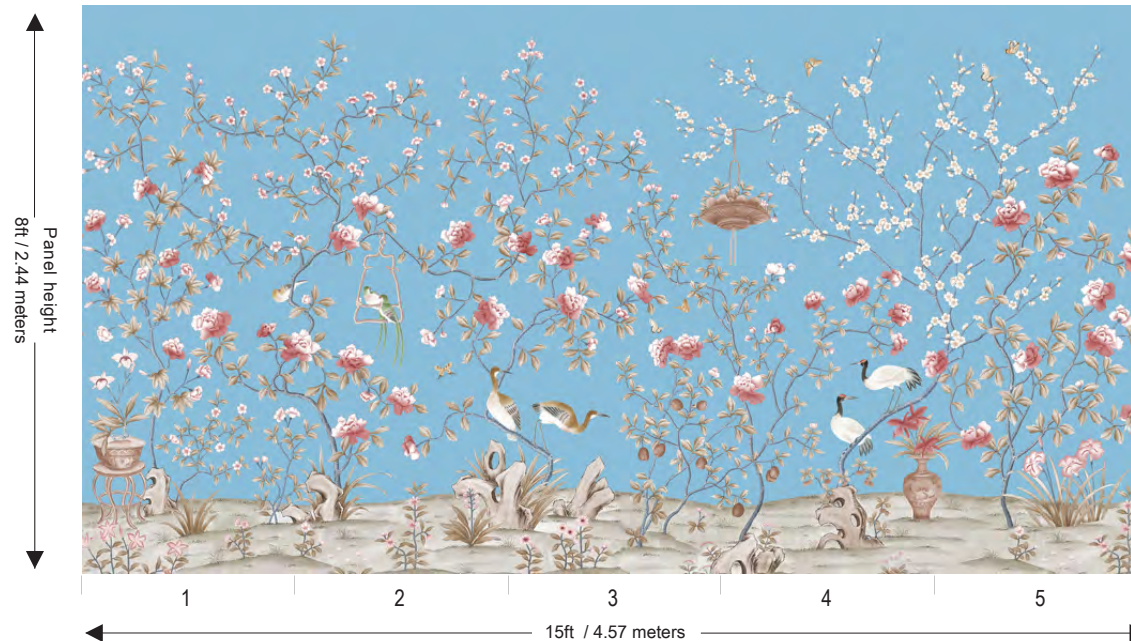
10 FT HIGH DESIGNS FROM COLLECTIONS 22, 26 & 23 CONSIST OF 6 INDIVIDUAL PANELS



How to order Standard Wall Covering

Designs from our Summer Palace, Suzhou Garden and Zen collection: the standard offer of 8ft high consists of 5 individual panels, the first panel of the design can join with the last panel.

8FT HIGH DESIGNS FROM COLLECTIONS 22, 26 & 23 CONSIST OF 5 INDIVIDUAL PANELS

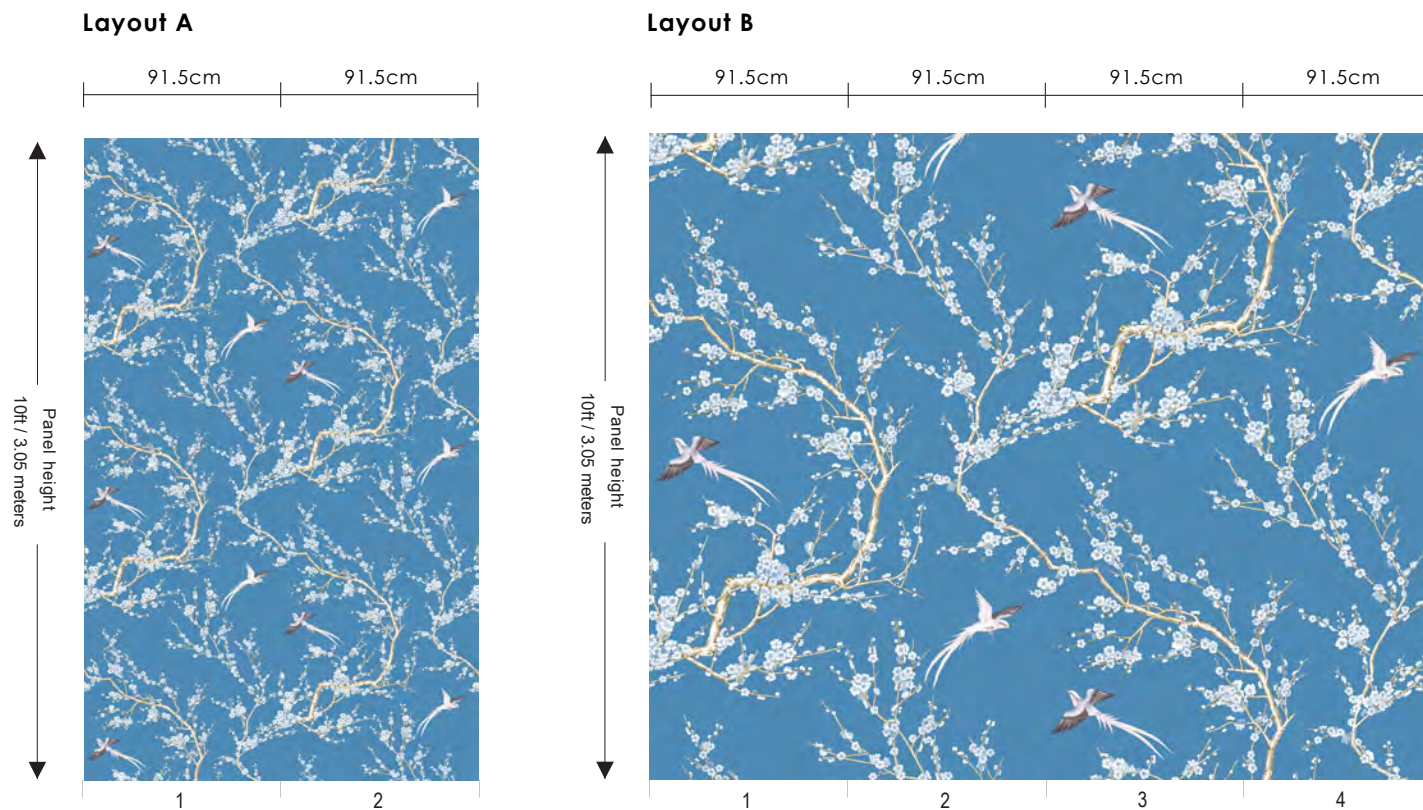


How to order Standard Wall Covering

Our collection 84 Xanadu is available in 2 scales / layouts for each design ; layout A or layout B.

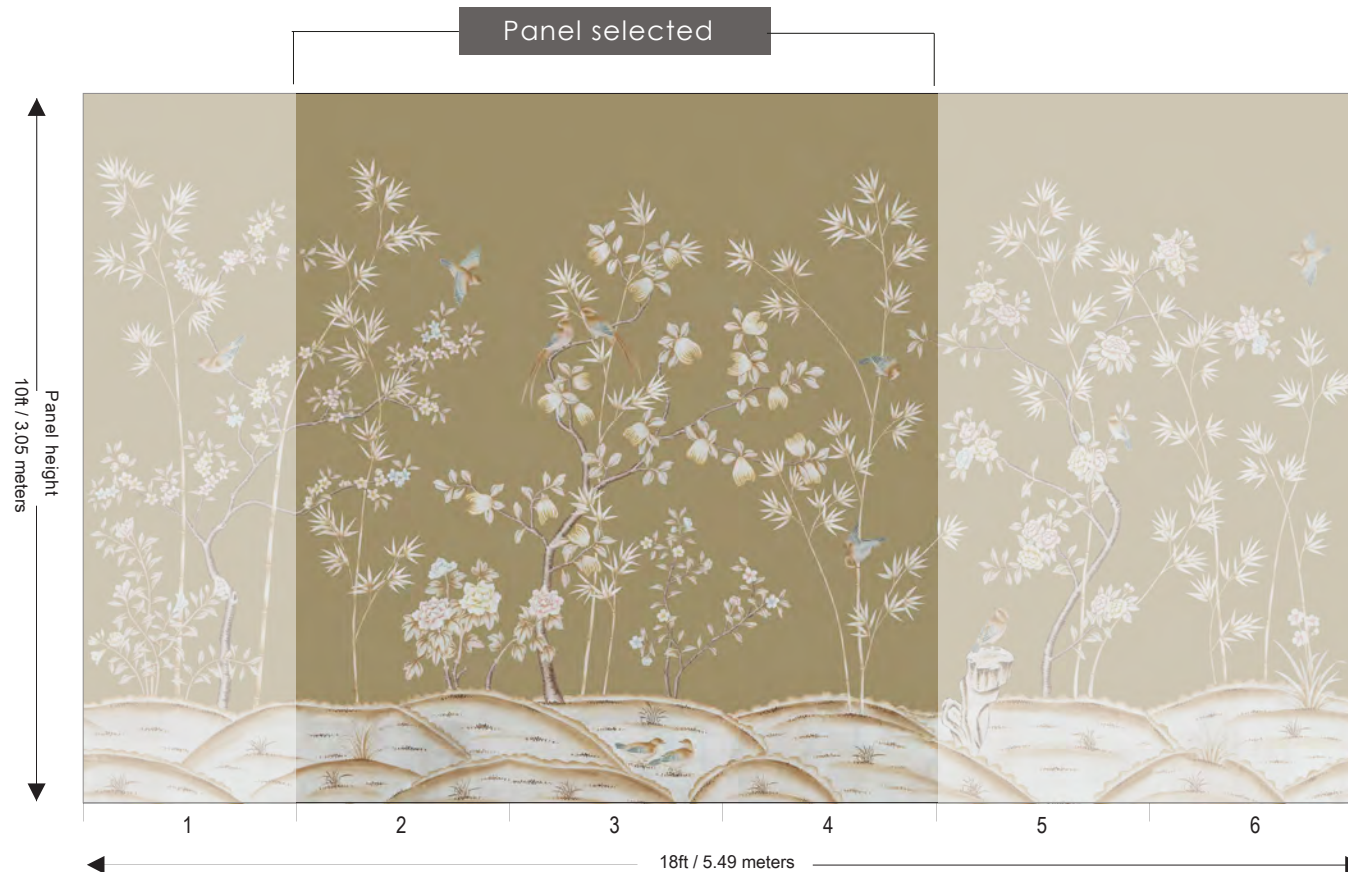
C. Using layout A, both the standard 8ft high and 10ft high offers consist of 2 panels, the first panel of the design can be joined to the last panel.

D. Using layout B, both the standard 8ft high and 10ft high offers consist of 4 panels, the first panel of the design can be joined to the last panel.



How to order Standard Wall Covering

If width of customer's wall is less than width of full design, then customer can order part of the design by selecting the panel numbers marked under the design.



How to order Standard Wall Covering

If width of customer's wall is more than width of full design, then the customer can order more panels of the design.



the first panel of the design can be joined to the last panel.

The background features a repeating pattern of stylized flowers and butterflies in a light, monochromatic color scheme. The flowers are large and detailed, with many petals, and the butterflies are scattered throughout the scene. The overall aesthetic is elegant and artistic.

D'ARTSTM

DIVISION OF DAVIDQIANTM CO. LTD

How to order Custom-made Wall Covering

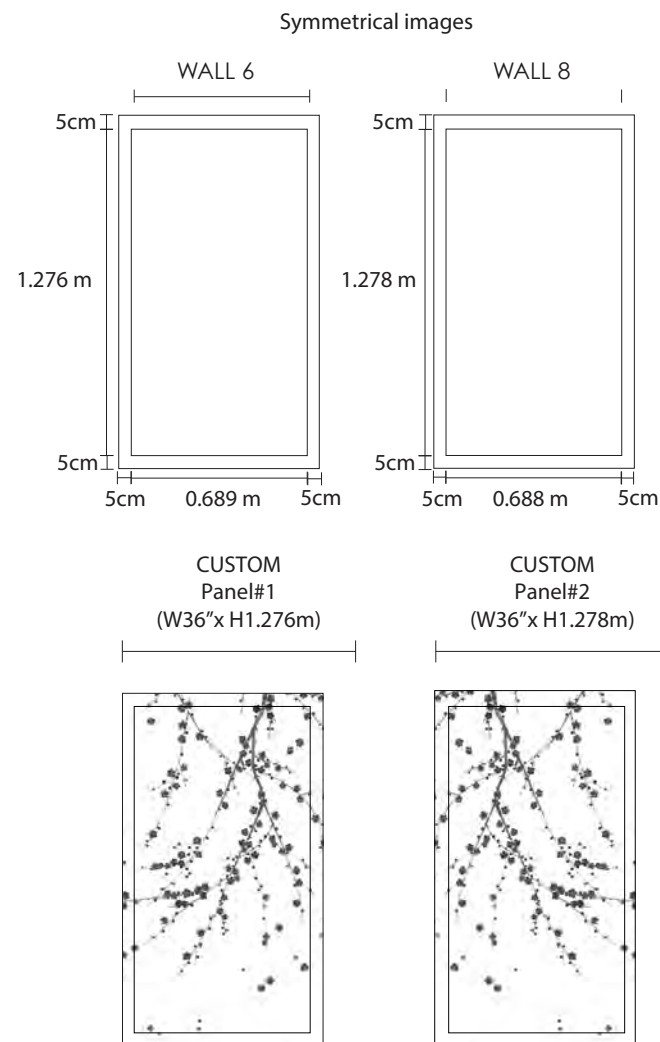
How to order Custom-made Wall Covering

D'ARTS offers many custom-made options to fit a scheme and achieve the perfect effect. Our custom-made options include:

- [Design to fit the wall elevation](#) - adjusting design to best fit the wall and to fit around windows and doors, keeping existing scale.
- [Re-scale the design to fit the wall](#) - adjusting scale of design to best fit the wall, we can alter design to fit low or high ceilings.
- [Custom design of our pattern](#) - we can alter decorative elements as requested by customer e.g. add or remove flower or birds or replace a bird with a flower.
- Custom colour the design - [change the material](#) to be printed on, [background colour and pattern colour](#).

How to order Custom-made Wall Covering

Design to fit the wall elevation – adjusting design to best fit the wall keeping existing scale



DRAWING NAME: Digital Printed Wallpaper

ORDER NO.:

DESIGN NAME:

DRAWING DATE:

DRAFT & LINE DRAWING BY:

Remarks:

5 ft x 2

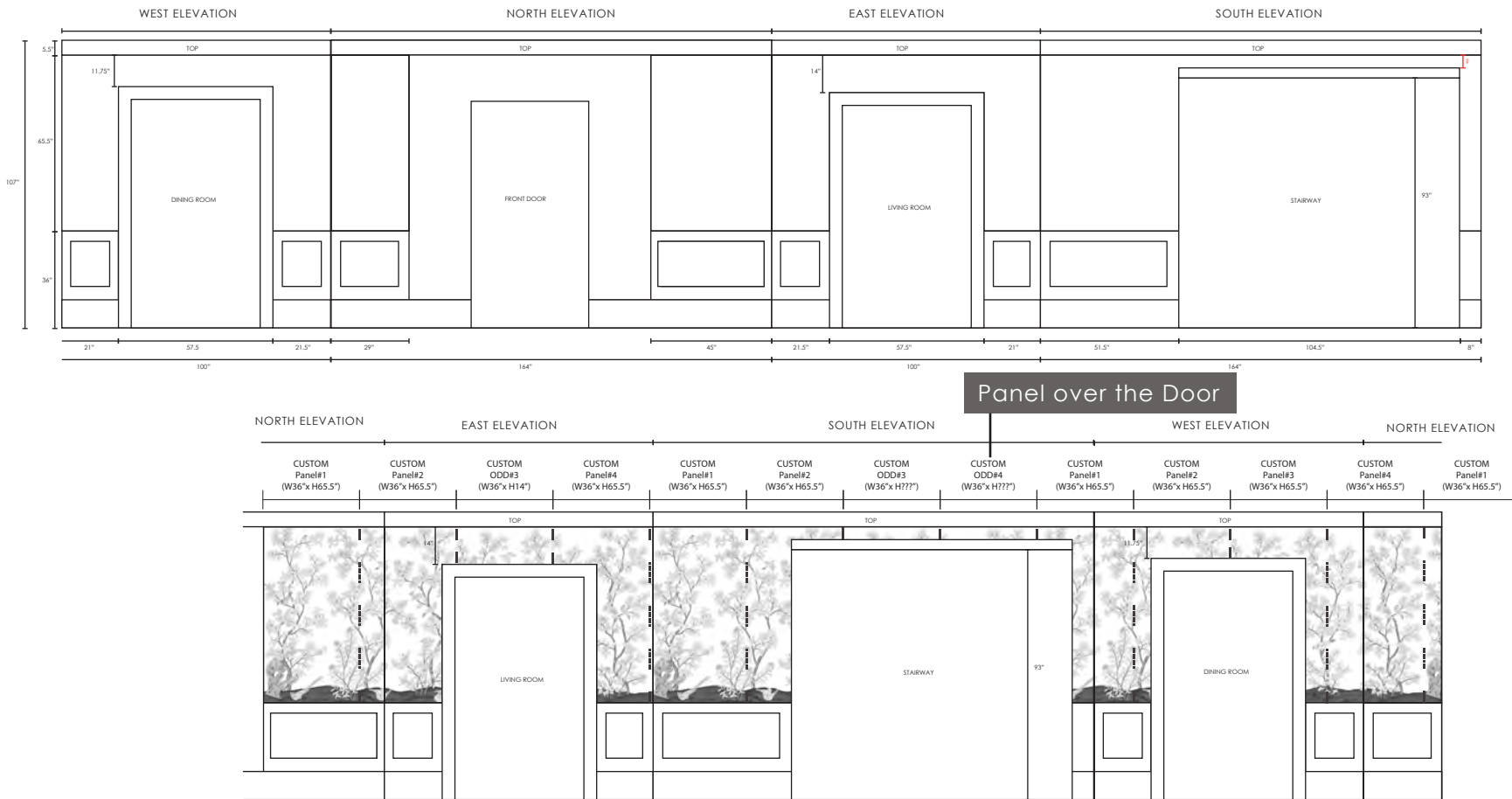
no scale down

custom design to fit the wall

custom design to fit the wall

How to order Custom-made Wall Covering

Re-scale the design to fit the wall – adjusting scale of design to best fit the wall

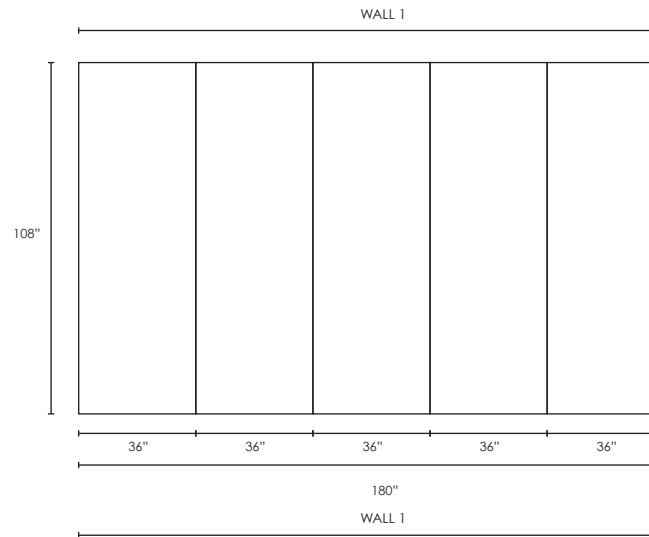


DRAWING NAME: Digital Printed Wallpaper
 ORDER NO.:
 DESIGN NAME:
 DRAWING DATE:
 DRAFT & LINE DRAWING BY:
 Remarks:
 6 ft x 10
 2 ft x 1
 1 ft x 2
 scale down to 6ft

Scale down to 6ft

How to order Custom-made Wall Covering

Custom design of our pattern – as requested by customer e.g. replace a bird with a flower.



DRAWING NAME: Digital Printed Wallpaper

ORDER NO.:

DESIGN NAME:

DRAWING DATE:

DRAFT & LINE DRAWING BY:

Remarks:

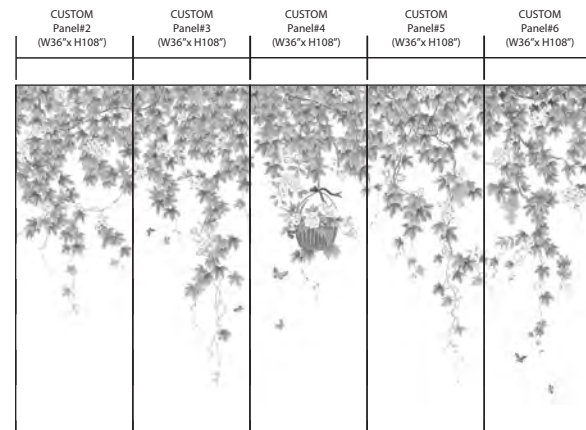
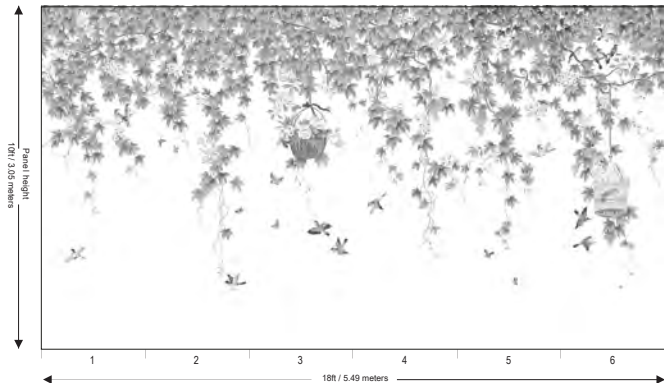
9 FT x 5

Custom design, no birds

no scale down

custom design
without birds

Standard design



How to order Custom-made Wall Covering

Customer can select a background colour from D'ARTS colour swatches, or provide a Pantone reference, Benjamin Moore colour swatch or send us a physical colour chip or fabric cuttings for D'ARTS to match.

Silk 220912



Standard colour



Change background colour

How to order Custom-made Wall Covering

Customer can select colours for the pattern from the colourways of other D'ARTS designs or provide Pantone reference, Benjamin Moore colour swatch or send us a physical fabric cuttings or colour chips if they would like to custom certain colours of design elements

Please note we can change the general colour of the design but are not able to alter individual flowers, feathers on birds etc. In the example shown we have changed the brown leaves to green which changes all of the brown leaves to green so the colours remain balanced and look natural. We are NOT able to add colours to make some of the leaves green and some yellow. We can change a group of colour but NOT individual colours.

Silk 220912



Standard colour



Change pattern / element colour

How to order Custom-made Wall Covering

Change the material:

Customer can select a material they want design printed on from any of the materials D'ARTS offer

Silk 220912



Standard colour



Change material

To order custom-made wall covering

1. Customer selects a design from our catalogue and can choose an existing colour and material to be printed on or can choose to:
 - [Custom colour:](#)
 - A. Customer can select a background colour from D'ARTS colour swatches, or provide a Pantone reference, Benjamin Moore colour swatch or send us a physical colour chip or fabric cuttings for D'ARTS to match.
 - B. Customer can select colours for the pattern from the colourways of other D'ARTS designs or provide Pantone reference, Benjamin Moore colour swatch or send us a physical fabric cuttings or colour chips if they would like to custom certain colours of design elements
 - [Change the material:](#)

Customer can select a material they want design printed on from any of the materials D'ARTS offer

Please note colour can vary when printing on different materials so there is no guarantee of 100% colour match to original material.

2. Customer provides D'ARTS with a wall elevation with all detailed measurements (don't forget measurements for and around windows, doors, chimney breasts etc.)
3. D'ARTS provides a [design layout showing design on a wall elevation](#) and the required number of panels.
4. D'ARTS provides a quotation according to design, colour, material selected and number of panels
5. D'ARTS creates an A4 sample to show the custom-made revisions for customer approval **Please note requests for A4 samples are limited to a maximum of 3 samples for each room being decorated.**
6. When both sample and design layout are approved by customer in writing, D'ARTS will provide an invoice.
7. Standard lead time is 2-3 weeks from receipt of payment, depending on our production schedule. Payment is required in full before production begins.
8. Customer can order the material in the same colour as the background colour so it matches the design.